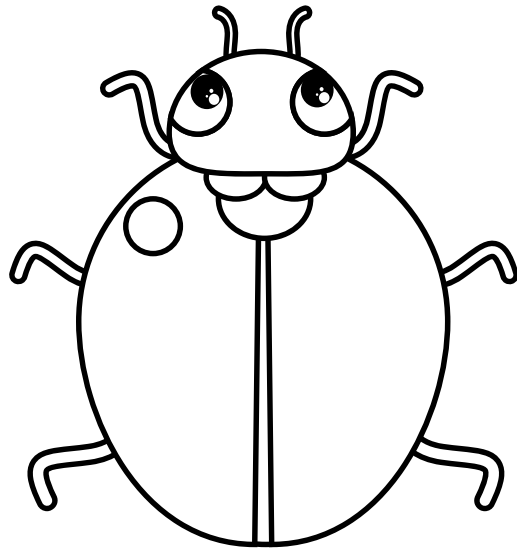


NUMBER TRACING WORKSHEET

1

one



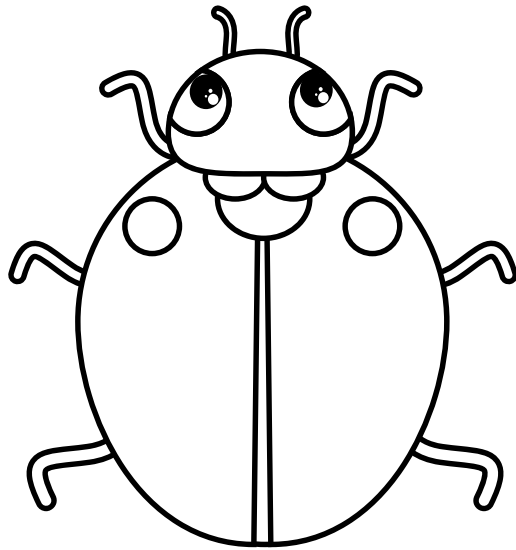
Two sets of handwriting practice lines. Each set consists of a solid top line, a dashed middle line, and a solid bottom line. The first set is divided into five vertical columns by dashed lines, and the second set is divided into five vertical columns by dashed lines.

one one one

one one one

NUMBER TRACING WORKSHEET

2
two



2 2 2 2 2

2 2 2 2 2

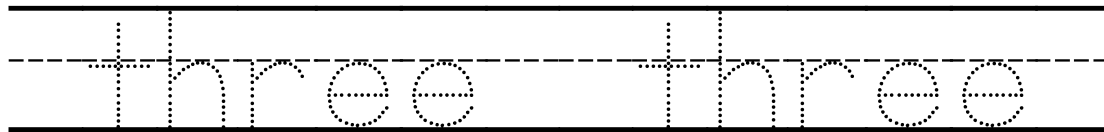
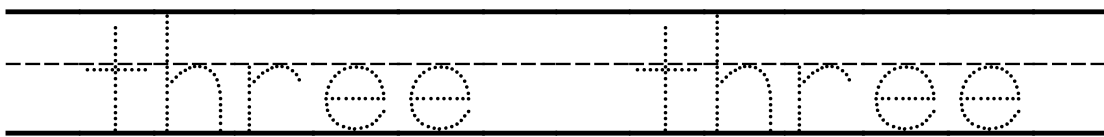
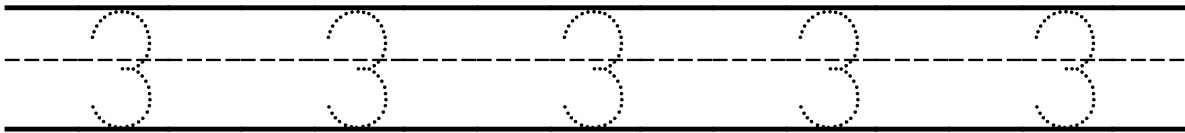
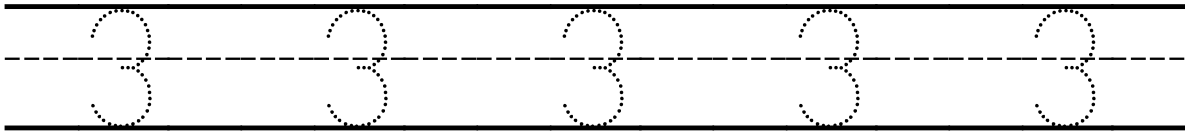
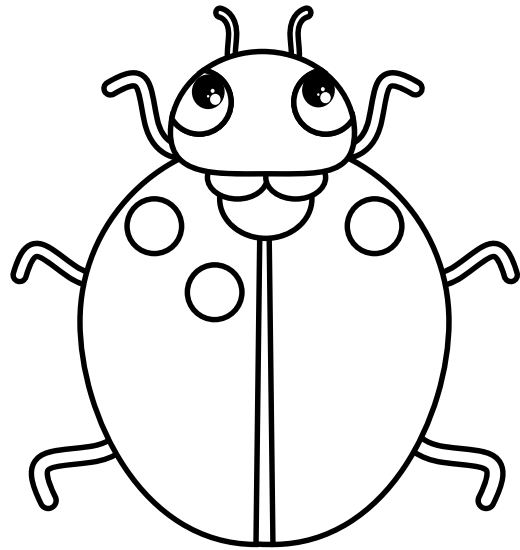
two two two

two two two

NUMBER TRACING WORKSHEET

3

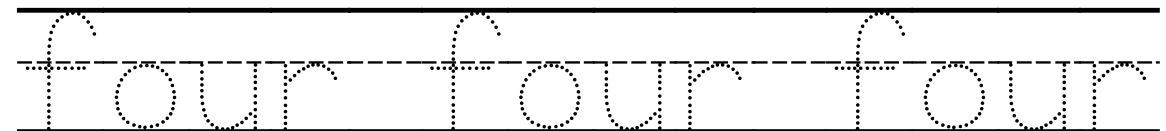
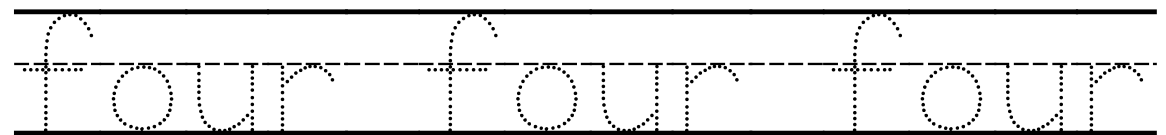
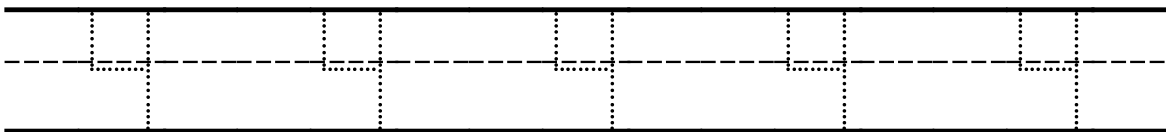
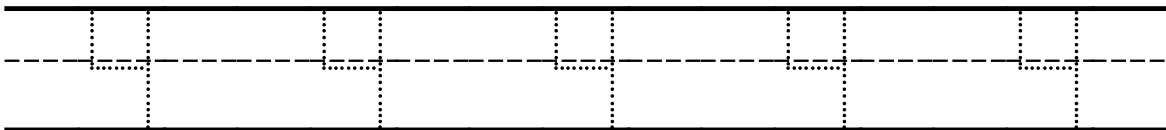
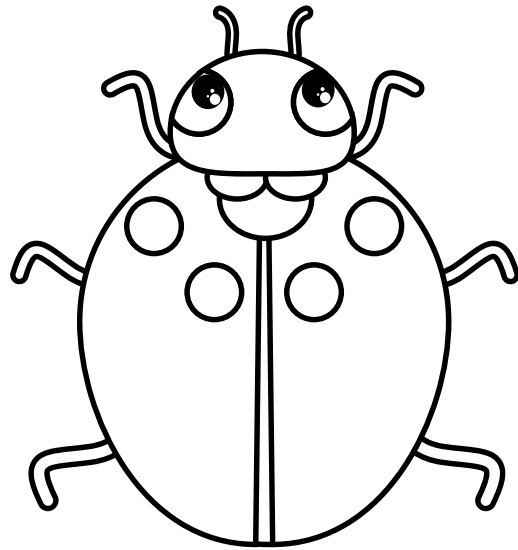
three



NUMBER TRACING WORKSHEET

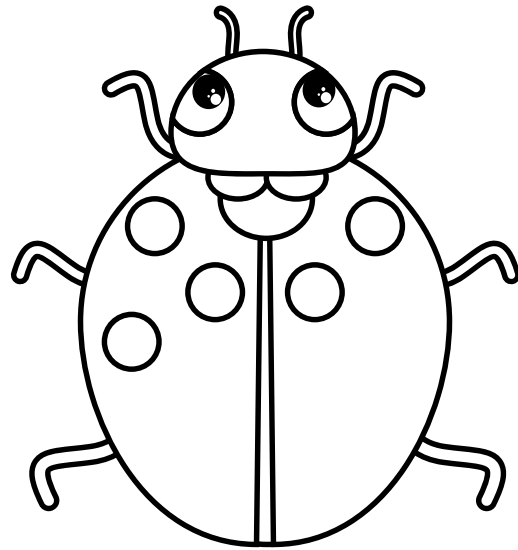
4

four



NUMBER TRACING WORKSHEET

5
five



5 5 5 5 5

5 5 5 5 5

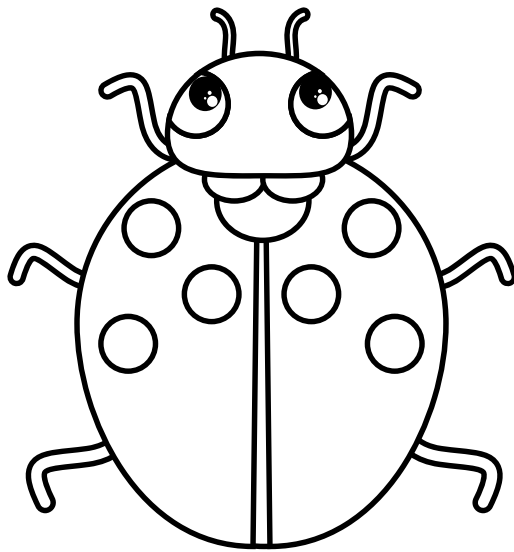
five five five

five five five

NUMBER TRACING WORKSHEET

6

six



6 6 6 6 6

6 6 6 6 6

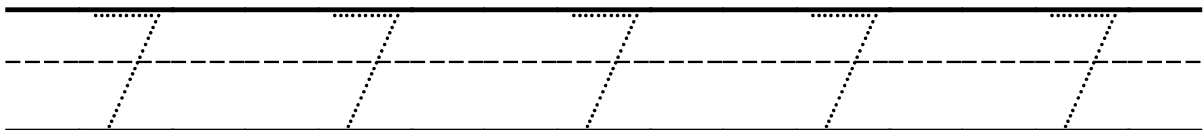
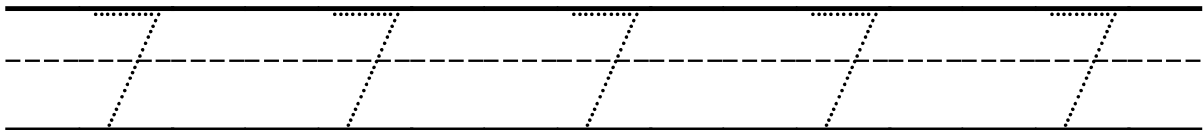
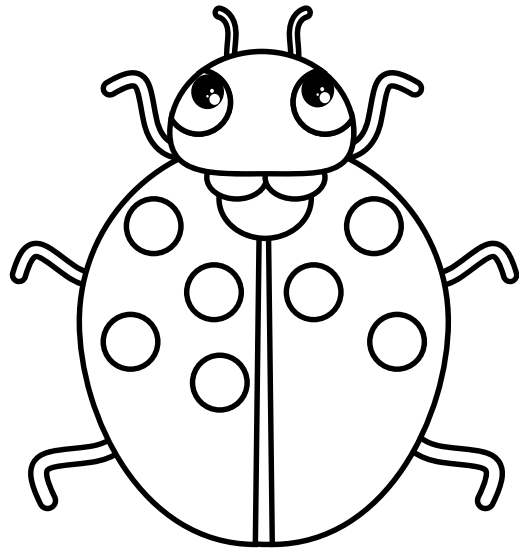
six six six six

six six six six

NUMBER TRACING WORKSHEET

7

seven



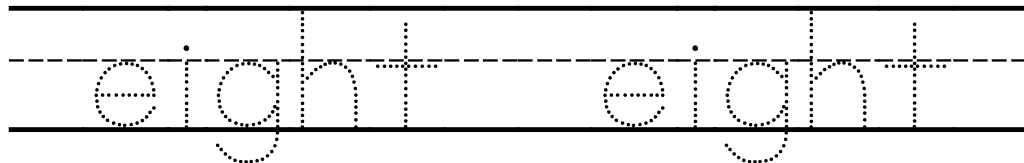
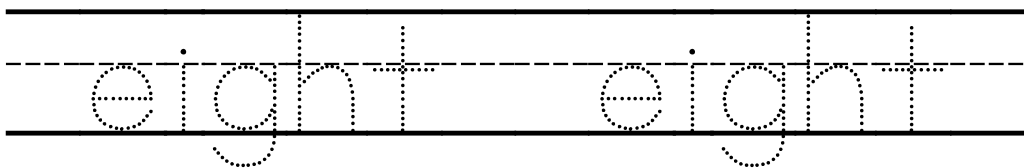
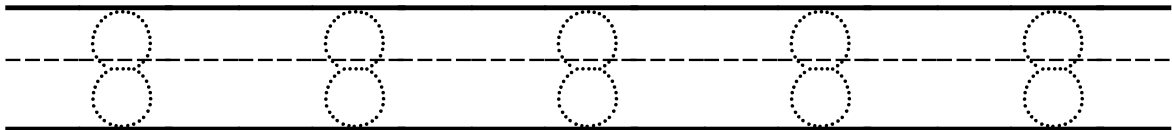
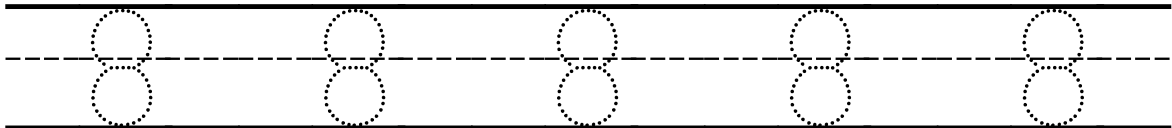
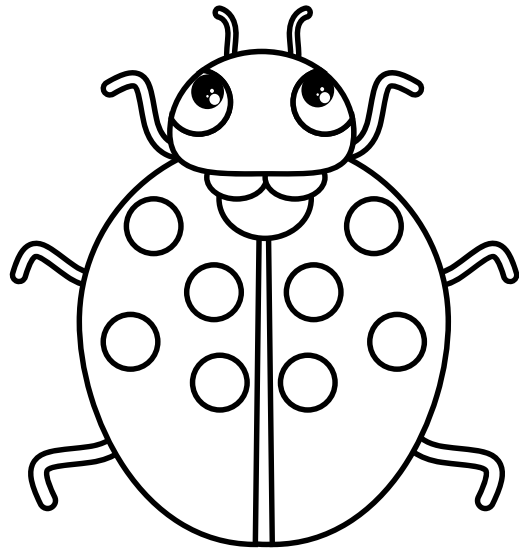
seven seven

seven seven

NUMBER TRACING WORKSHEET

8

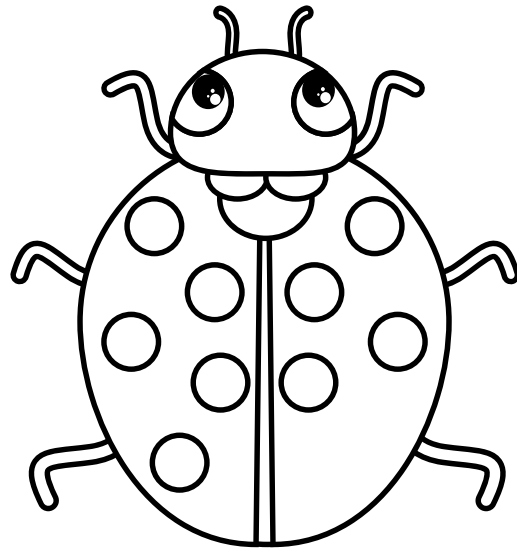
eight



NUMBER TRACING WORKSHEET

9

nine



9 9 9 9 9

9 9 9 9 9

nine nine nine

nine nine nine

NUMBER TRACING WORKSHEET

10

ten

